

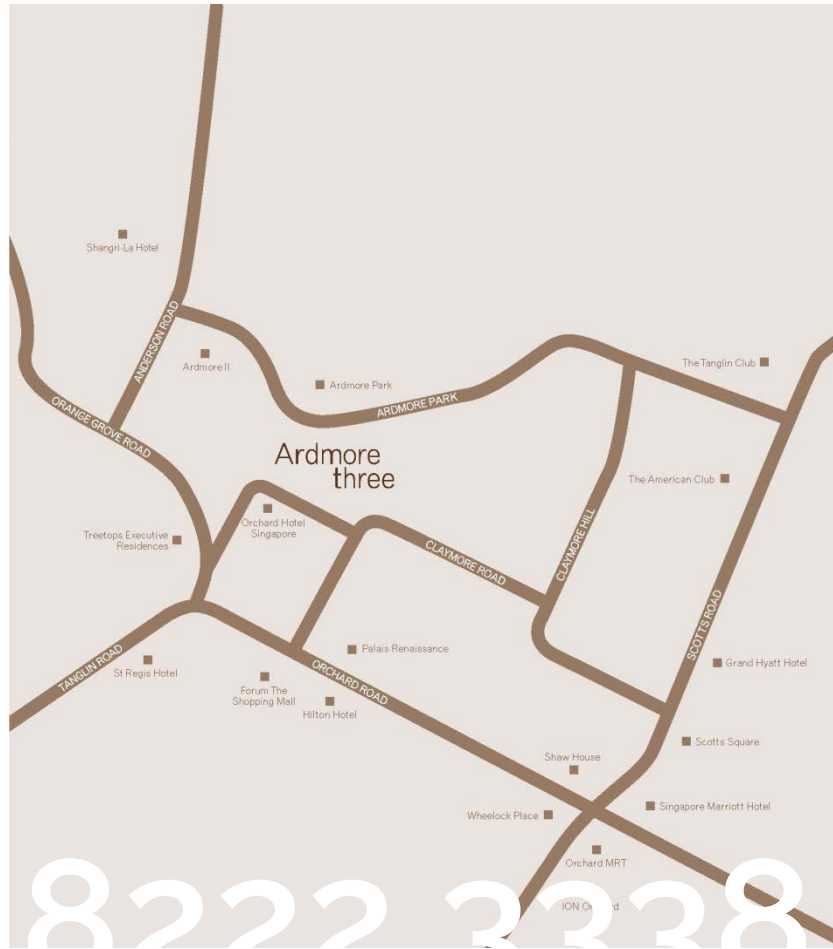
Ardmore three



Ardmore Three – a soaring 36-storey tower of contemporary architecture, is nestled in the heart of Singapore’s most coveted residential enclave in Ardmore Park. Elevated 9 floors above the ground, each of its 84 luxurious apartments enjoys breathtaking views of its serene surroundings.

Ardmore Three – a prized residence of exceptional luxury.

Location Map

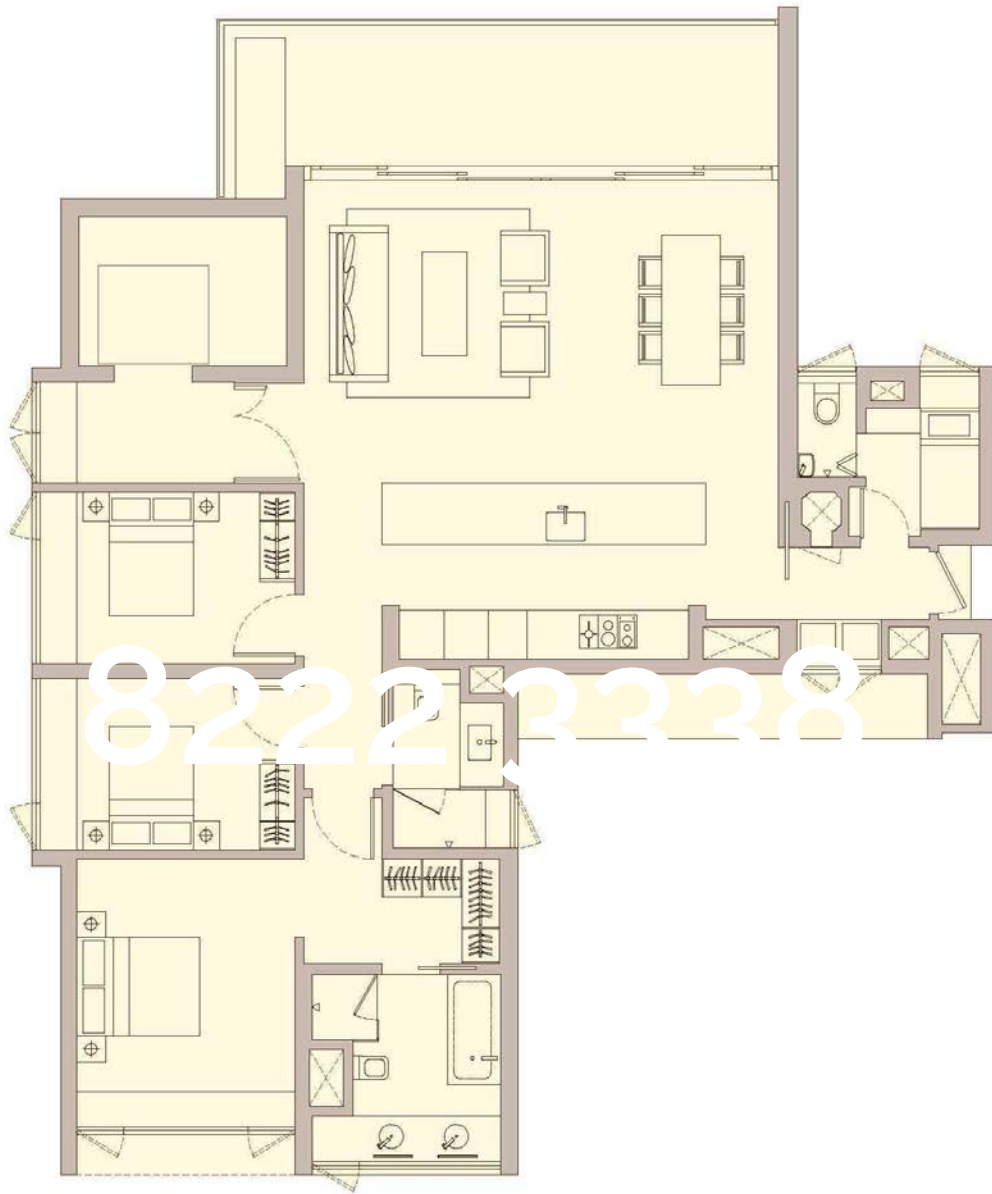


Site Plan

- A Guardhouse
- B Secret Garden
- C Shower / Changing Alcove
- D Bliss Pool
- E Soleil Deck
- F Lap Pool
- G The Lounge (Level 4)
- H Porte Cochere
- I The Gym (Level 4)
- J Reflective Alcove
- K Sculpture Lawn
- L Alfresco Dining Terrace
- M Residents' Side Gate



Floor Plans



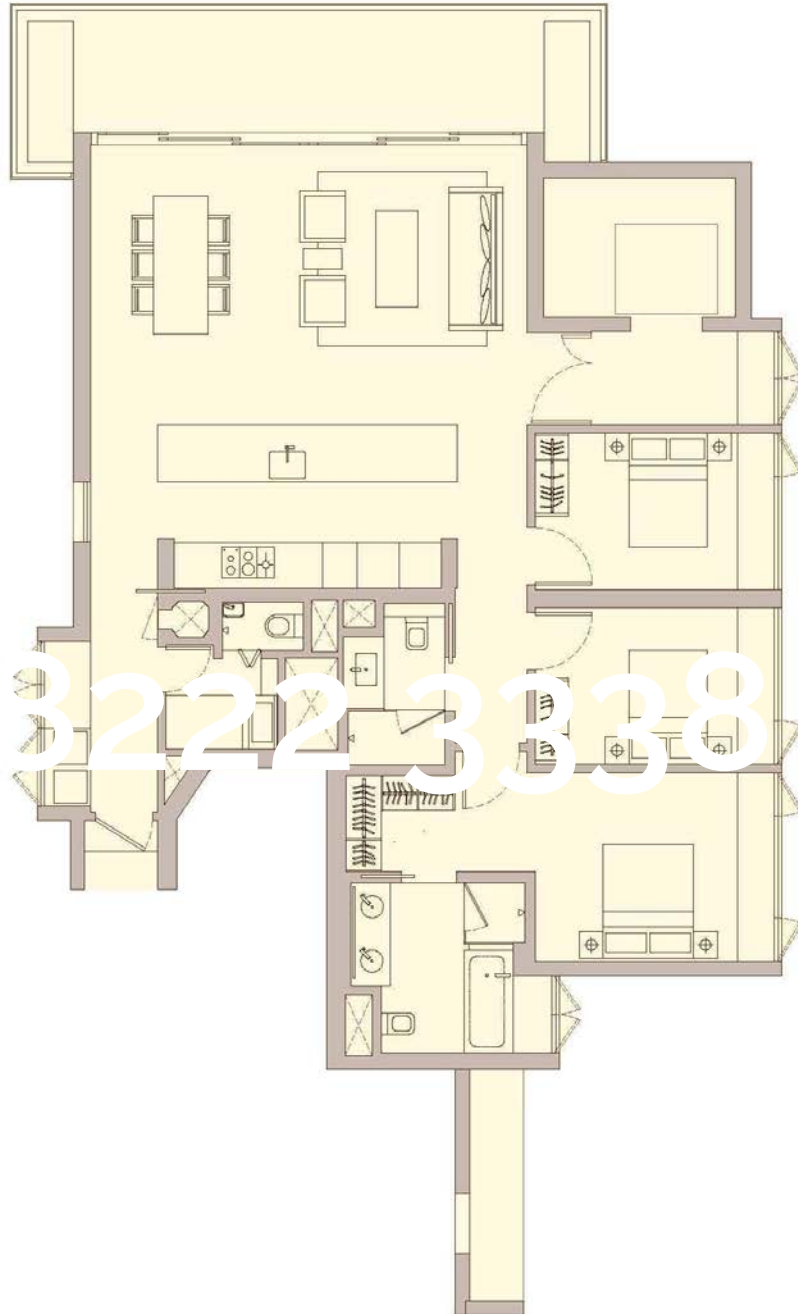
TYPE A1

166 sqm / 1,787 sqft

#09-01 to #36-01



Floor Plans



TYPE A2
165 sqm / 1,776 sqft
#09-02 to #36-02

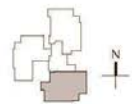
Floor Plans



TYPE A3

162 sqm / 1,744 sqft

#09-03 to #36-03



Ardmore three

Developer	<ul style="list-style-type: none">➤ Botanica Pte Ltd, a wholly-owned subsidiary of Wheelock Properties (Singapore) Limited (會德豐地產(新加坡)有限公司)
Address	<ul style="list-style-type: none">➤ 3 Ardmore Park Singapore 259950
Tenure	<ul style="list-style-type: none">➤ Estate in Fee Simple (Freehold)
Site Area	<ul style="list-style-type: none">➤ Approximately – 55,000sqft
Total Units & Unit Types	<ul style="list-style-type: none">➤ 1 tower with 84 units➤ All 3-bedroom apartments➤ Type A1 – 1,787 sqft / 165 sqm➤ Type A2 – 1,776 sqft / 163 sqm➤ Type A3 – 1,747 sqft / 162 sqm
Maintenance Fees	<ul style="list-style-type: none">➤ Estimated \$1,500 per month
Consultant	<ul style="list-style-type: none">➤ Architect – Architects 61➤ Main Contractor – Kim Seng Heng Engineering Construction➤ Landscape Architect – Colin K Okashimo and Associates➤ Interior Design – Silverfox Studios➤ M&E – HPX Consulting Engineers➤ Structural – HCE Engineers Partnership➤ Vendor's Solicitor – Wong Thomas & Leong